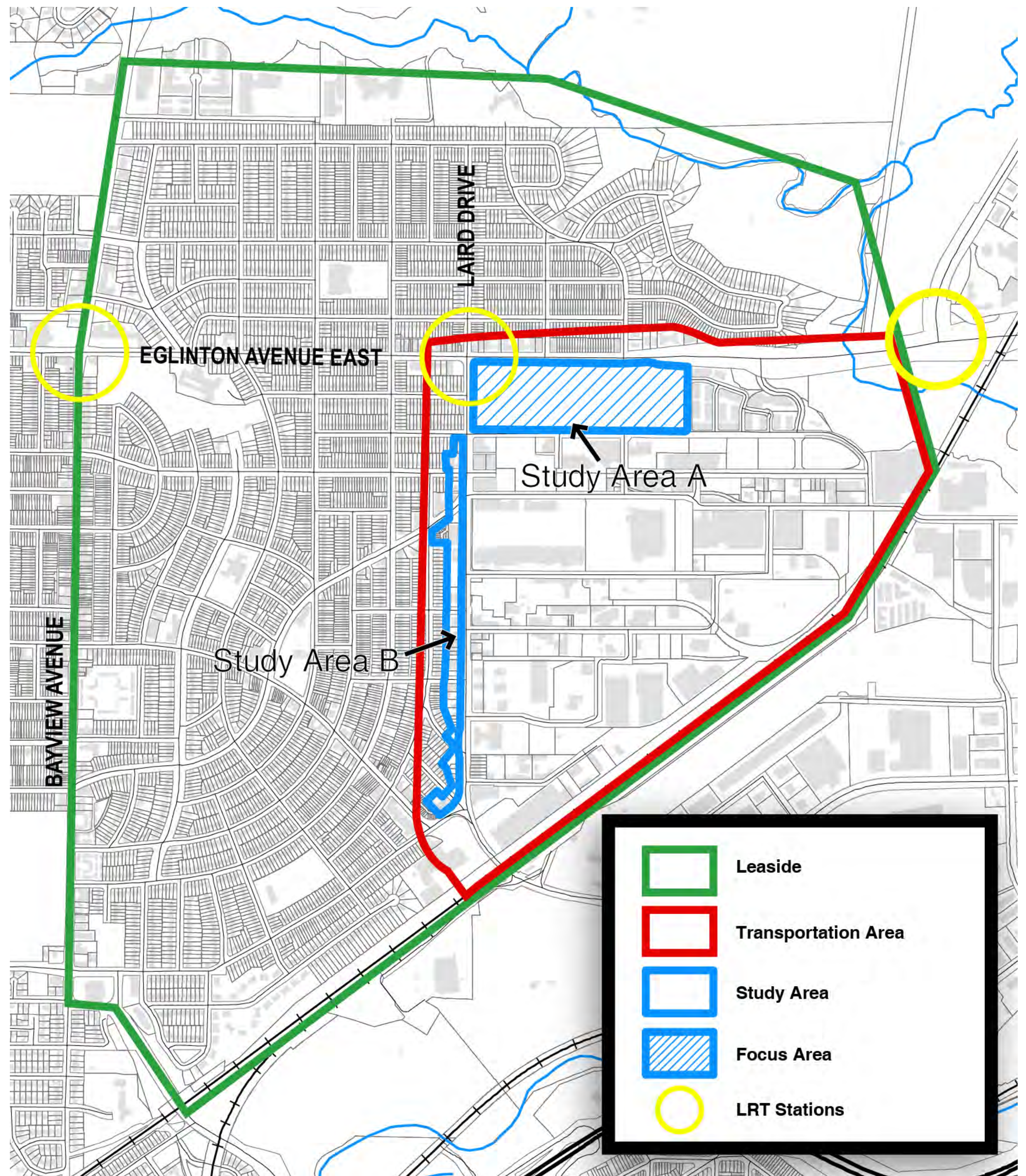


THE STUDY AREA

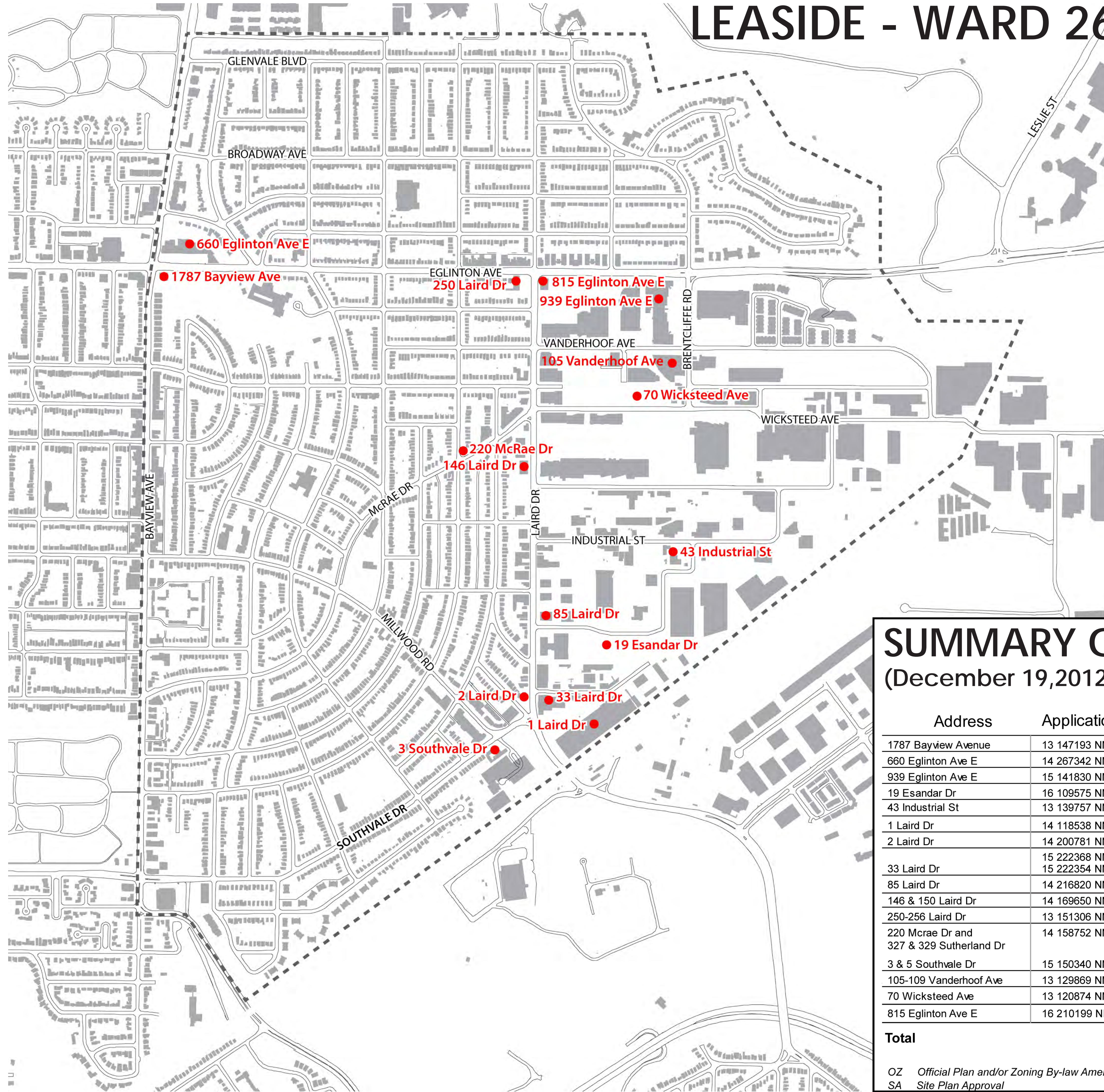
Laird in Focus is a study led by the City of Toronto City Planning Division that will develop a planning framework to guide future development of the Laird Drive and Eglinton Avenue East area. The study area includes lands south of Eglinton Avenue East, north of Vanderhoof Avenue, between Laird Drive and Aerodrome Crescent. It also includes the properties located on the west side of Laird Drive between Vanderhoof Avenue south to Millwood Road.

The study will refine and build upon the existing planning structure as well as recent planning initiatives undertaken in the area. It will develop a vision and policies for a complete community which supports new streets and blocks, parks and open spaces, buildings, community services and facilities, enhanced public realm and a transportation and servicing strategy.



DEVELOPMENT ACTIVITY

LEASIDE - WARD 26



SUMMARY OF APPLICATIONS (December 19, 2012 - August 19, 2016)

Address	Application Number	Status	Date of Submission	Residential Units	GFA (Residential and non-residential) m ²
1787 Bayview Avenue	13 147193 NNY 26 SA	Under Review	10-Apr-13	N/A	N/A
660 Eglinton Ave E	14 267342 NNY 26 OZ	Under Review / OMB Appeal	23-Dec-14	408	33,767
939 Eglinton Ave E	15 141830 NNY 26 OZ	Under Review / OMB Appeal	16-Apr-15	1,500	106,800
19 Esandar Dr	16 109575 NNY 26 SA	Under Review	27-Jan-16	0	15,684
43 Industrial St	13 139757 NNY 26 SA	Under Review	25-Mar-13	N/A	2,515
1 Laird Dr	14 118538 NNY 26 SA	NOAC Issued Jul 16, 2015	18-Feb-14	N/A	16,368
2 Laird Dr	14 200781 NNY 26 SA	NOAC Issued Jun 21, 2016	01-Aug-14	69	7,653
33 Laird Dr	15 222368 NNY 26 SA 15 222354 NNY 26 OZ	Under Review	14-Sep-15	N/A	4,389
85 Laird Dr	14 216820 NNY 26 SA	Under Review	04-Sep-14	N/A	10,930
146 & 150 Laird Dr	14 169650 NNY 26 OZ	Appealed to OMB - awaiting decision	06-Jun-14	284	23,561
250-256 Laird Dr	13 151306 NNY 26 SA	Under Review	16-Apr-13	N/A	N/A
220 Mcrae Dr and 327 & 329 Sutherland Dr	14 158752 NNY 26 SA	OMB Approved	20-May-14	9	1,826
3 & 5 Southvale Dr	15 150340 NNY 26 OZ	Under Review	01-May-15	98	8,360
105-109 Vanderhoof Ave	13 129869 NNY 26 OZ	Under Review	07-Mar-13		5,000
70 Wicksteed Ave	13 120874 NNY 26 SA	Under Review	15-Feb-13	N/A	15,852
815 Eglinton Ave E	16 210199 NNY 26 OZ	Under Review	19-Aug-16	1,435	132,941
Total				3,803	385,646

OZ Official Plan and/or Zoning By-law Amendment
SA Site Plan Approval

COMMUNITY SERVICES AND FACILITIES

Help us learn about CS&F in the area ?

STEP 1

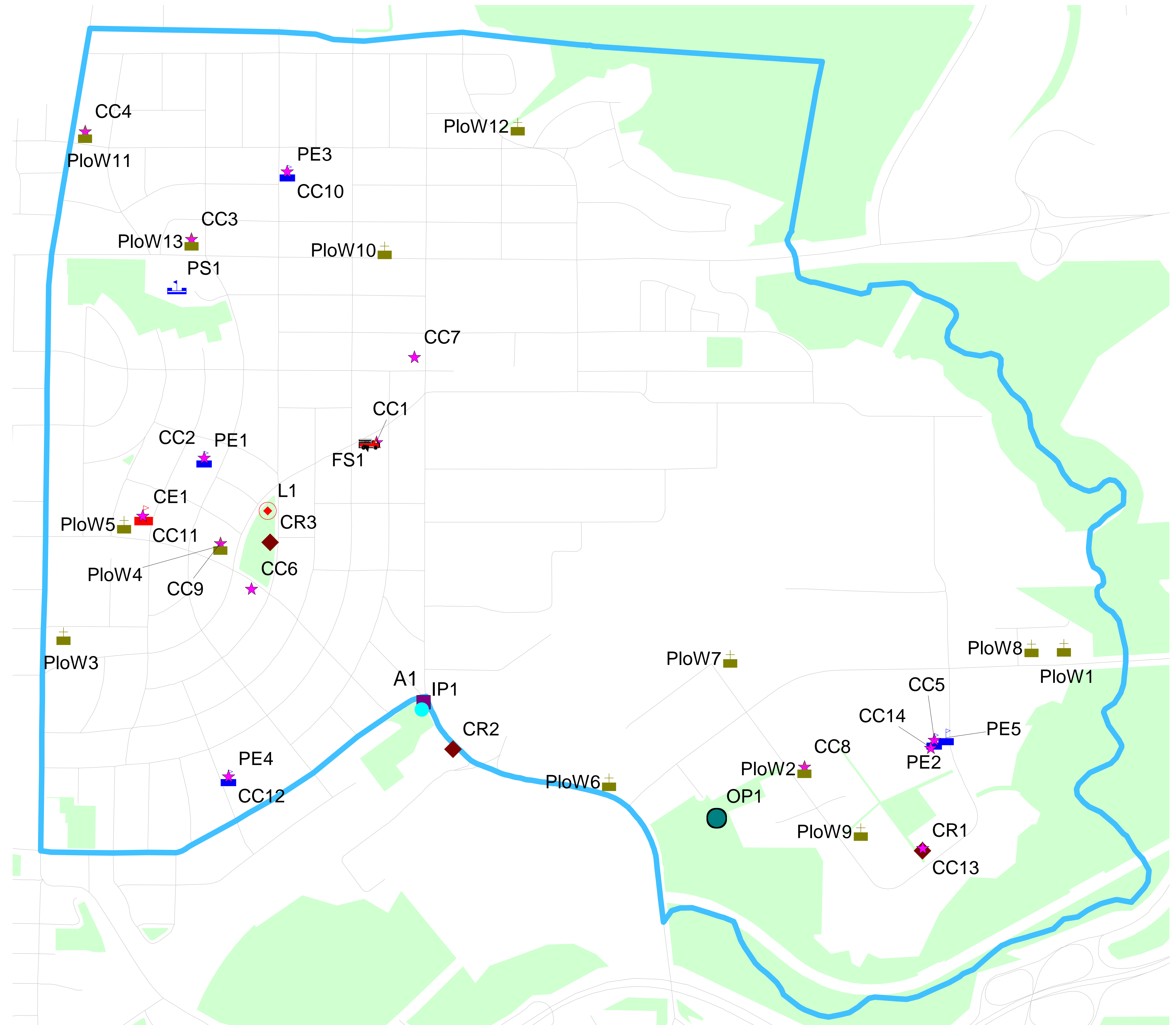
- What CS&F do you use in this area?
- Which services and facilities work well? Where can they be improved?
- What, if any, additional CS&F are needed in this neighbourhood?

STEP 2

- Grab a sticky note and write down why you use it or why it should be improved.

STEP 3

- Put it up on the map! If your comment applies to the area in general, please put it in the box:



Why look at CS&F as part of this study ?

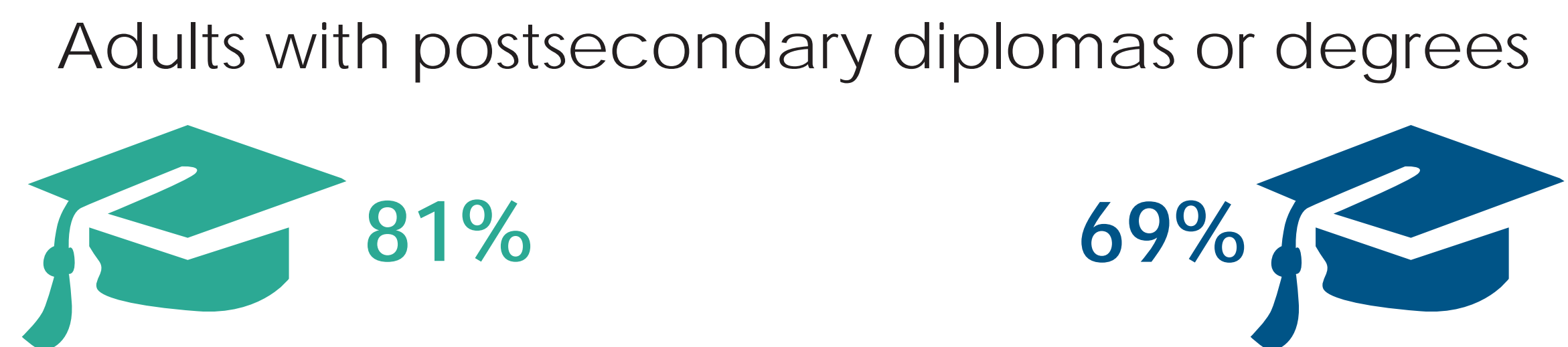
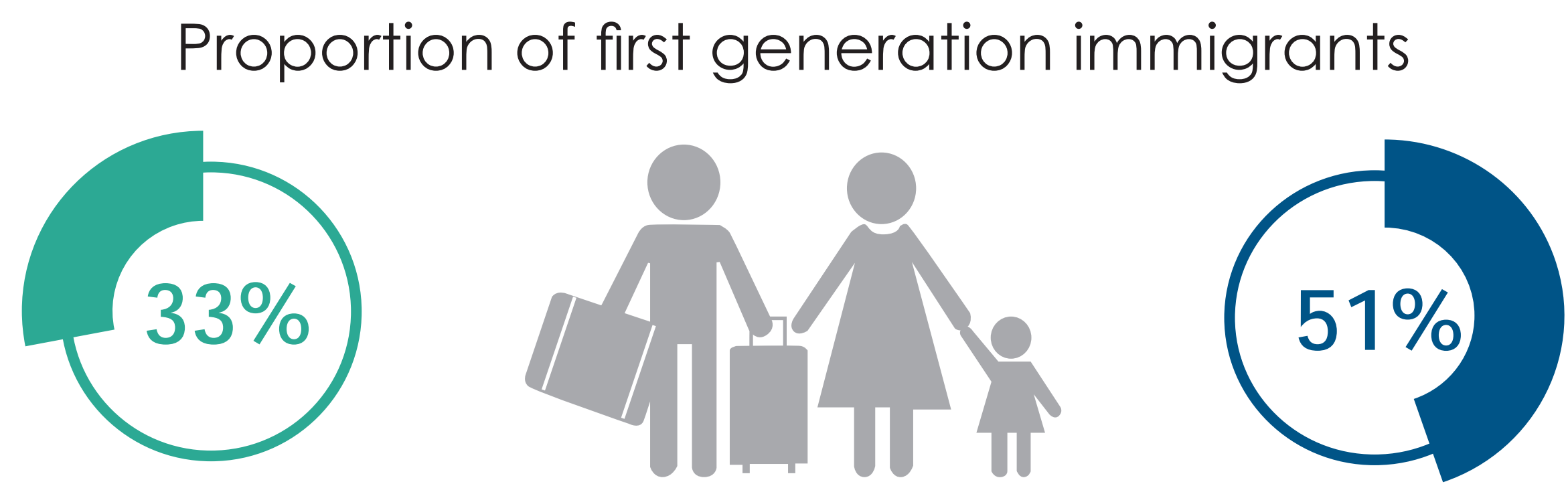
The CS&F component of this Study will review the services and facilities currently serving the area and examine the particular needs of the community, now and in the future, to determine what services and facilities are needed to support a growing population.

	Study Area		Pools (2)
	Arenas (1)		Public Elementary (5)
	Child Care Centre (14)		Public Secondary (1)
	Com/Rec Centre (3)		Catholic Elementary (1)
	Library (1)		Fire Station (1)
	Places of Worship (13)		Parks

WHO LIVES IN LEASIDE ?

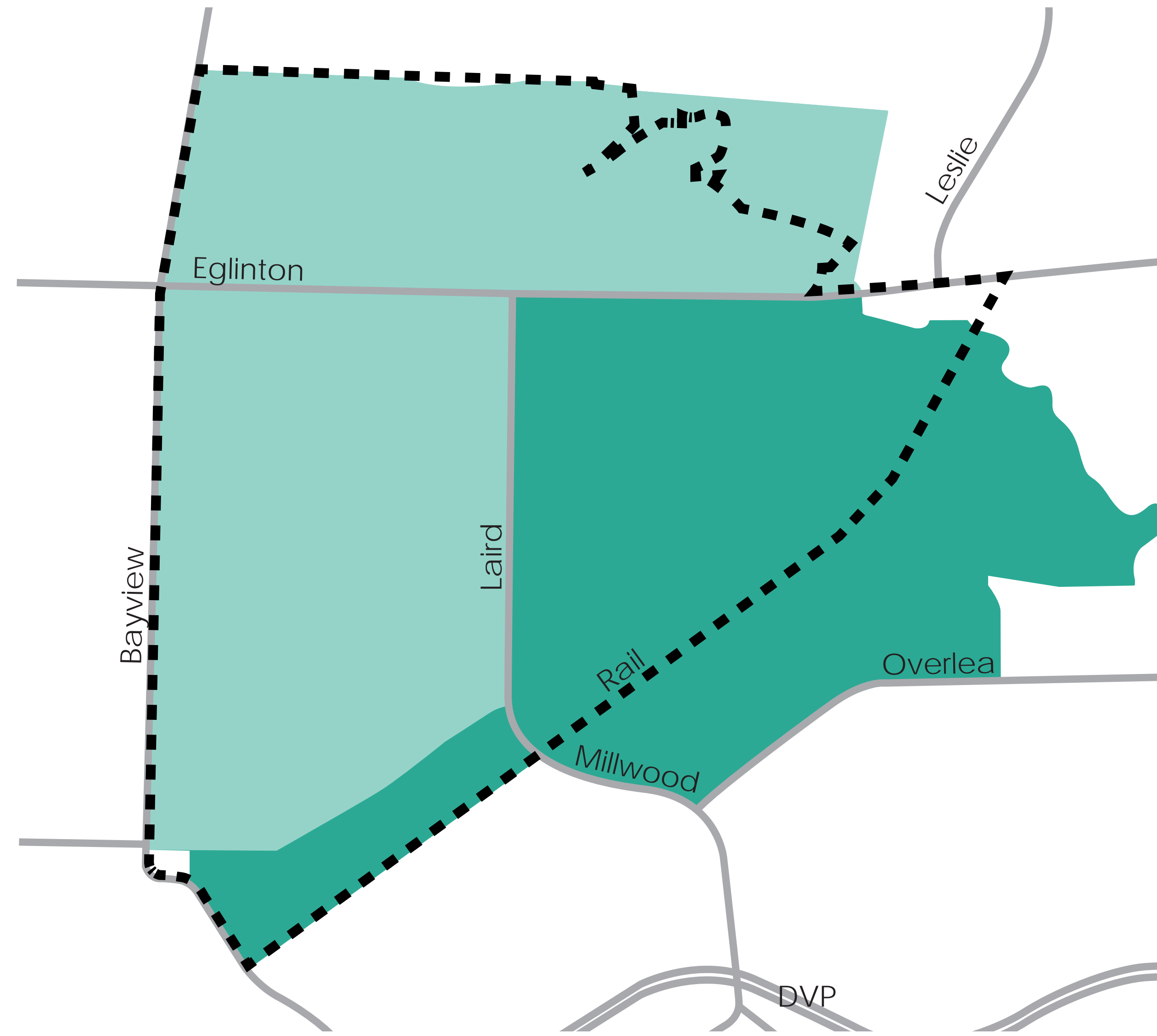
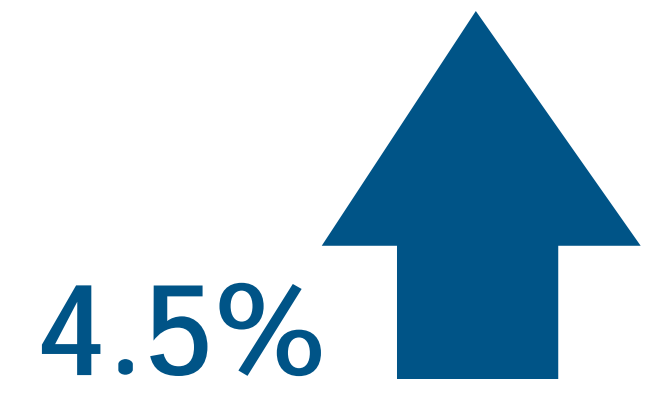
Study Area

Total Population
16,251



City of Toronto

Total Population
2,615,050



- Leaside Neighbourhood
- Area for Income Data
- Area for Demographic Data

Leaside

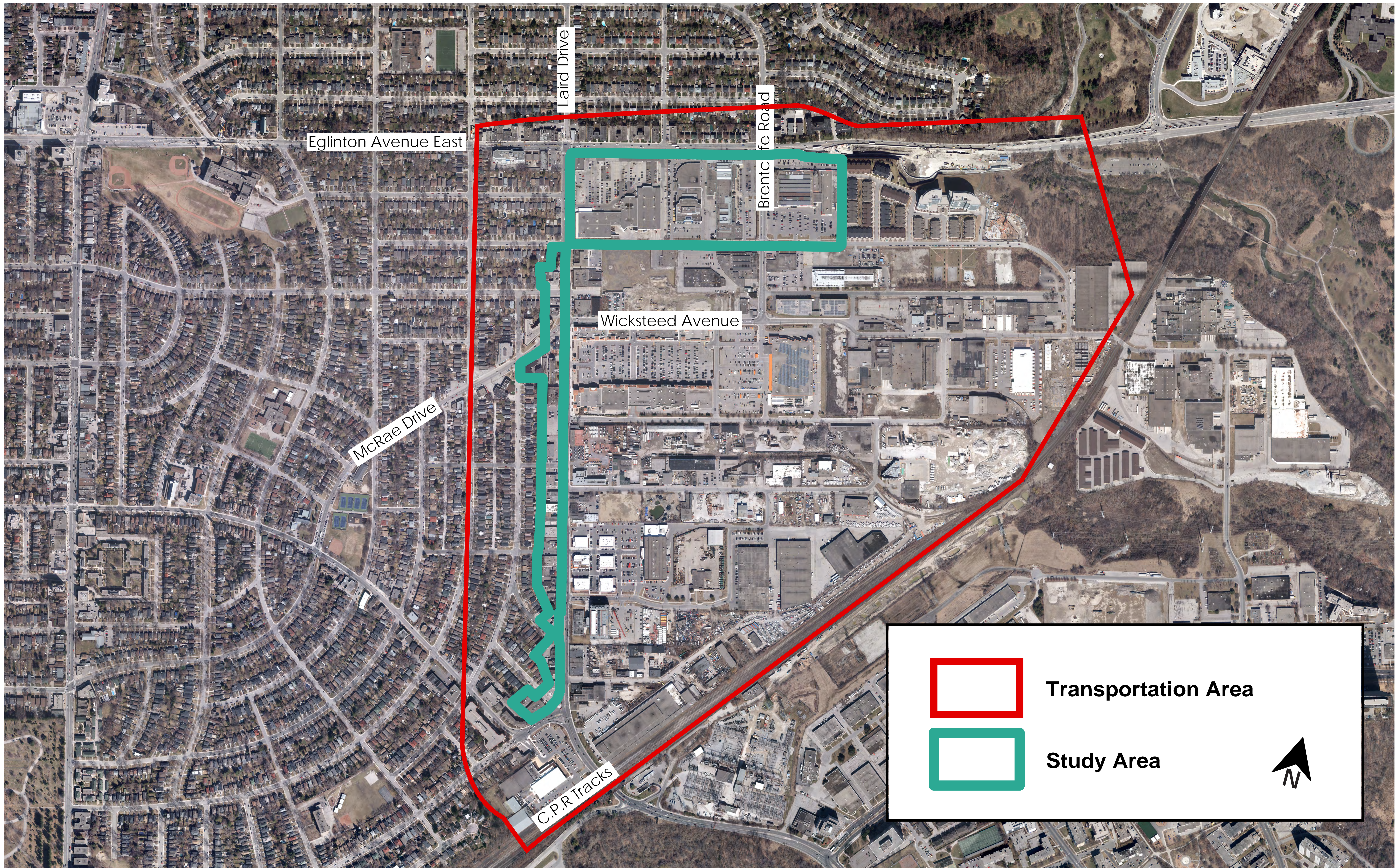
- Average household income \$ 207,182
- Low income population 7.3%
- Single detached house 50.2%
- Seniors population 15.4% (2,495)
- Children population 24.7% (4,015)

Toronto

- Average household income \$ 105,562
- Low income population 19.3%
- Single detached house 26.2%
- Seniors population 14.4% (377,445)
- Children population 21.1% (550,910)

Data Source: Census of Canada 2011, National Household Survey 2011, Statistics Canada

THE STUDY AREA

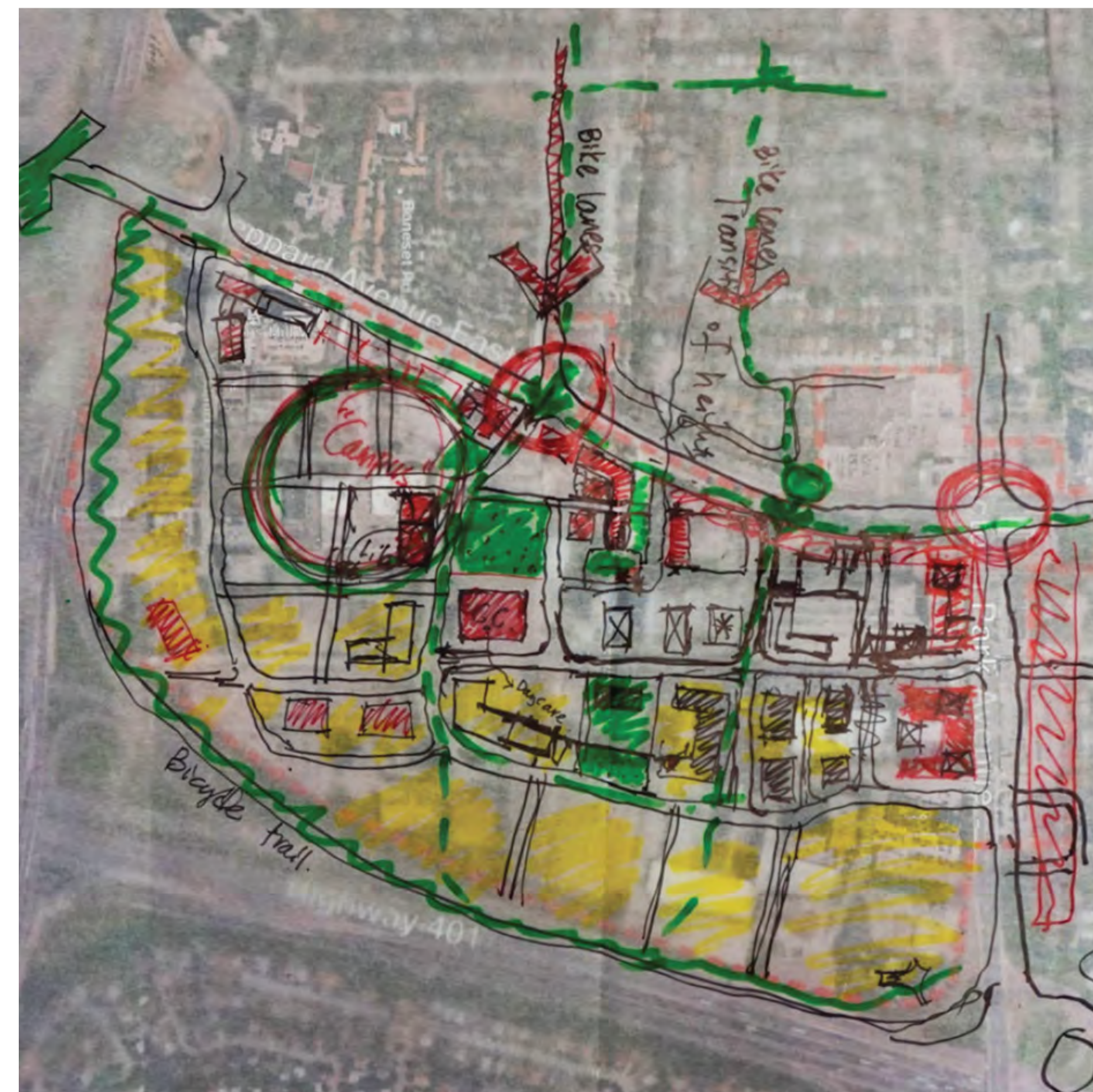


THE STUDY PROCESS



CONSULTATIONS

Visioning Workshop



Public and Private Stakeholder Meetings



Online Engagement



Planners in Public Spaces



In Focus



EGLINTON CONNECTS

DEMONSTRATION PLAN



■	Retail Space	■	Secondary Station Entrance
■	Community Services and Facilities	■	Station Mechanical Infrastructure
■	Main Station Entrance	■	Employment Uses

EXISTING CONDITIONS

Eglinton Avenue East



Laird Drive



Vanderhoof Avenue

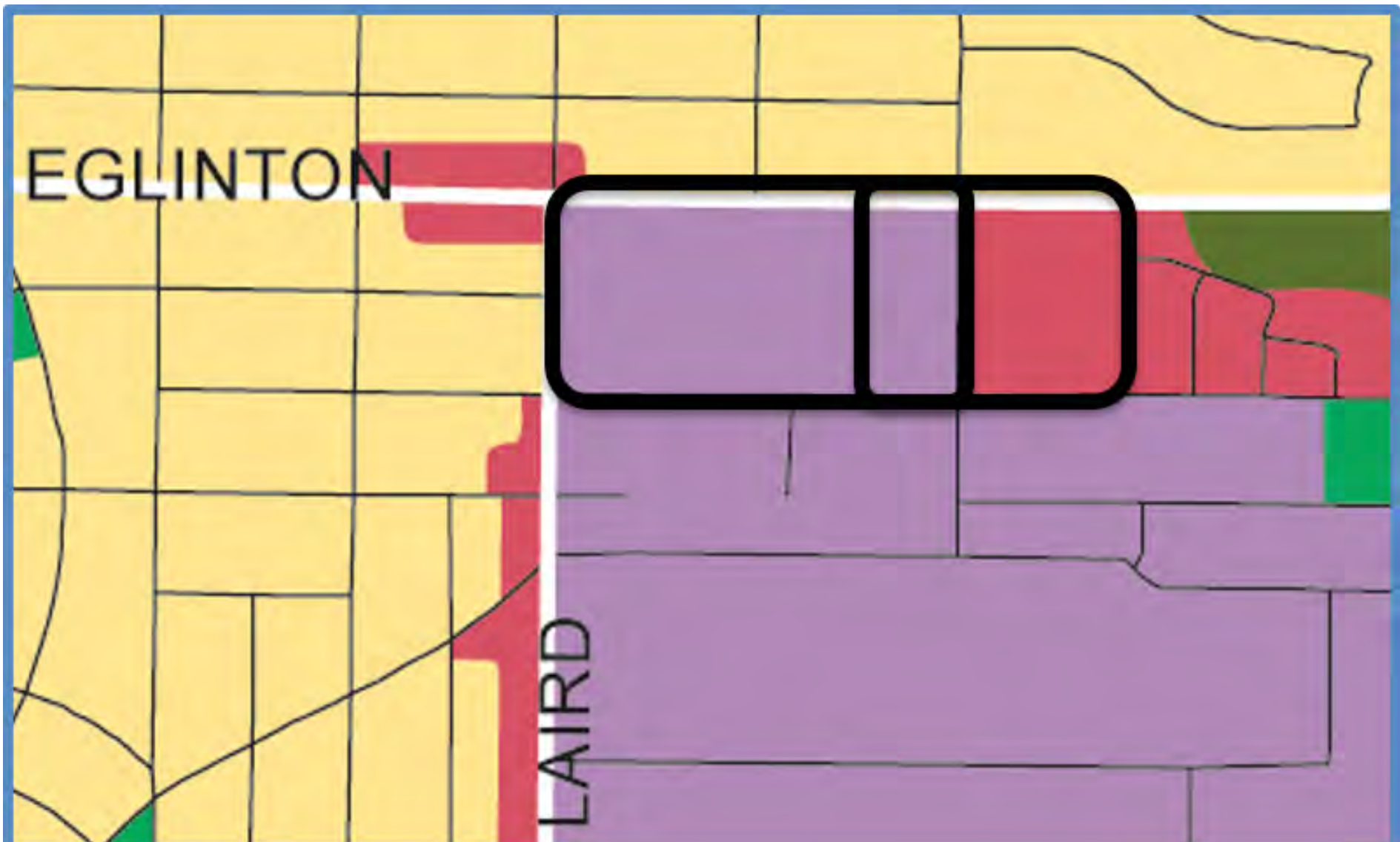


Brentcliffe Road

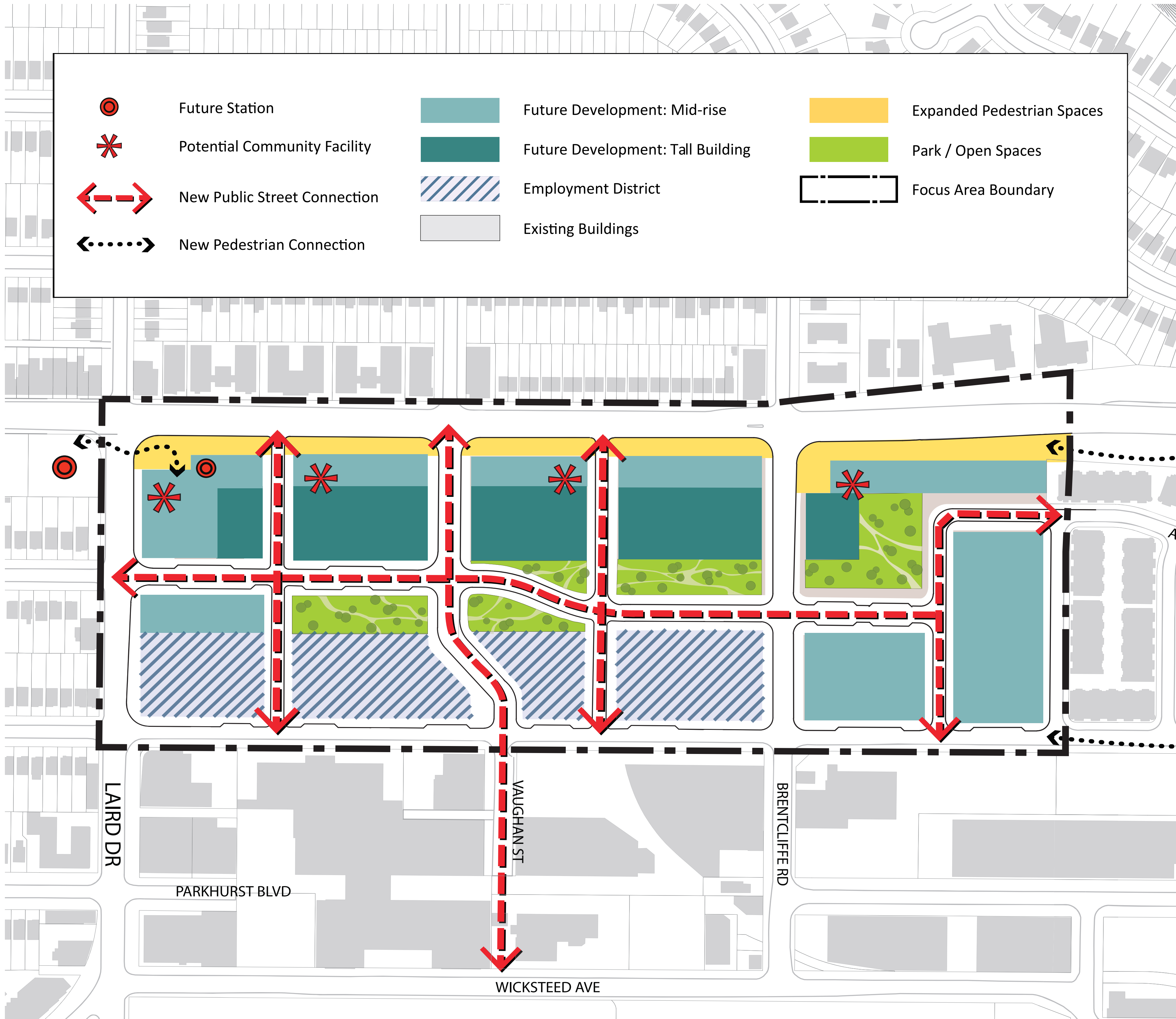
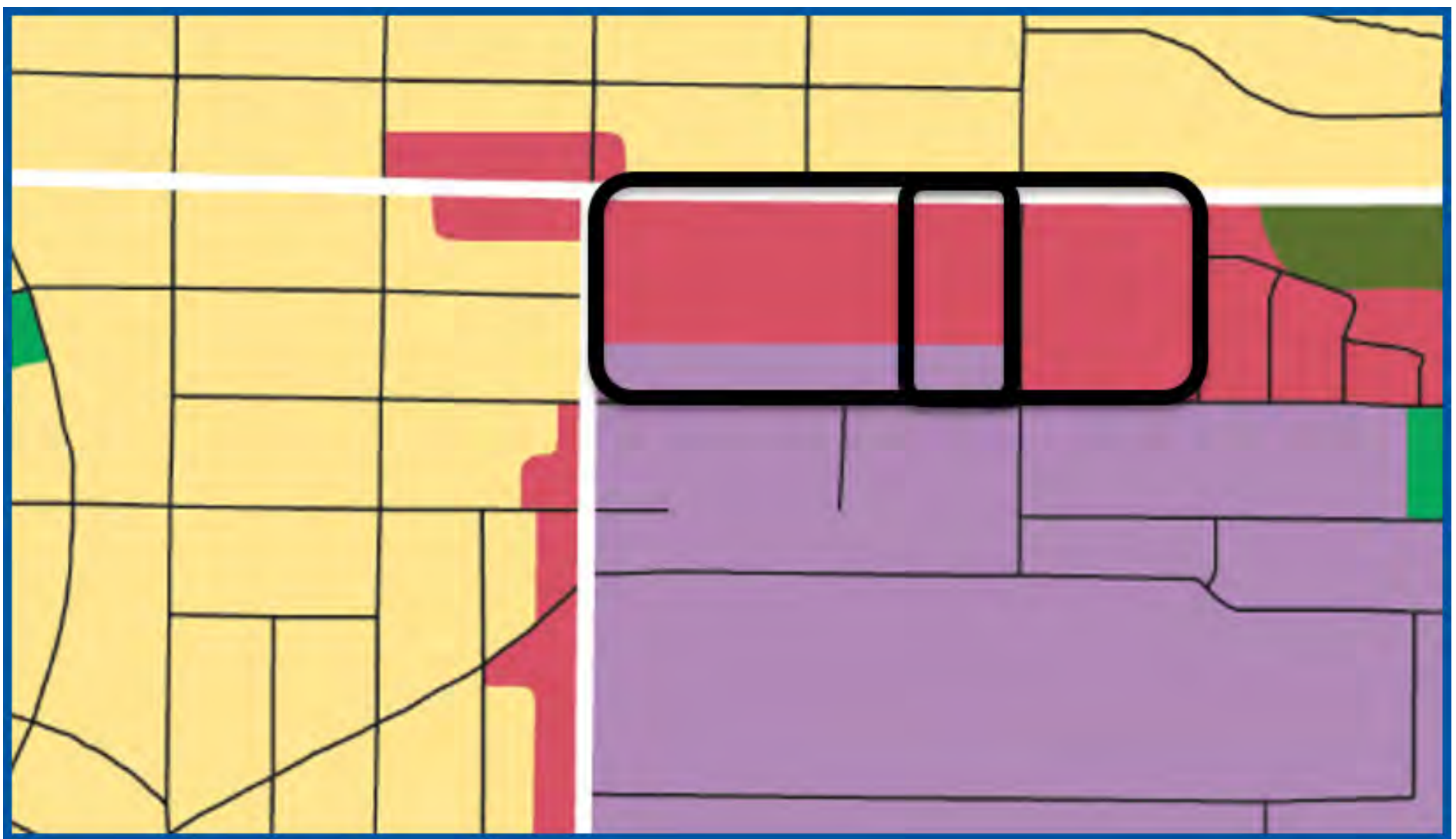


OFFICIAL PLAN & EGLINTON CONNECTS

Pre-OPA 231



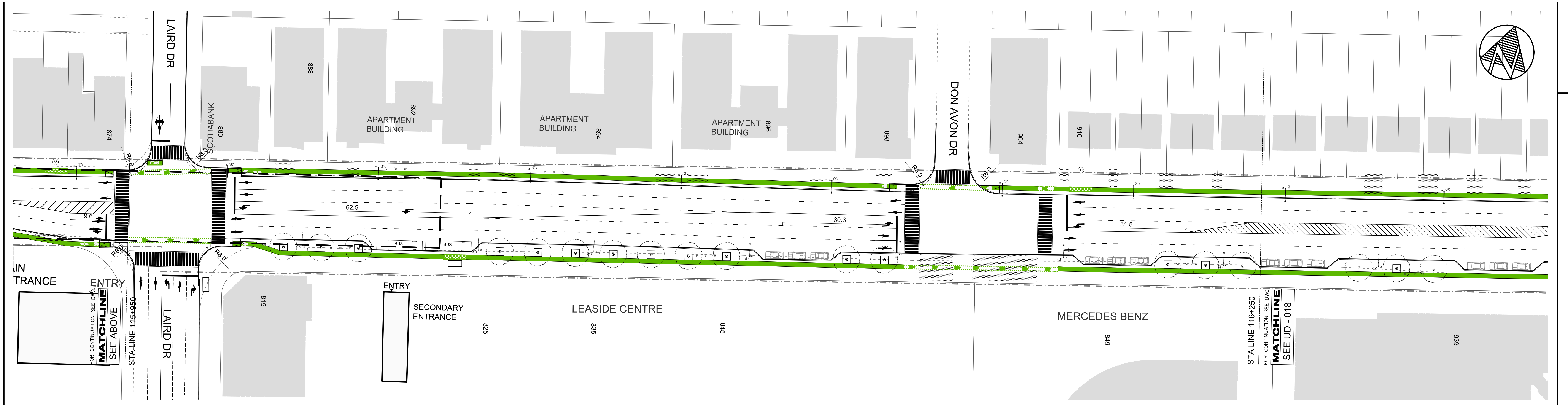
Post-OPA 231



LAND USE DESIGNATIONS



EGLINTON CONNECTS EA - STREETSCAPE PLAN



LEGEND

CITY OF TORONTO STANDARD BICYCLE RING - F-1-14	CITY OF TORONTO STANDARD LITTER RECEPTACLE - F-1-2a	RAISED BIKE LANE REFER TO DWG UD - 040	PROPOSED TREE, REFER TO DWG UD - 036 AND 037	OFFICIAL PLAN RIGHT-OF-WAY	CITY OF TORONTO STANDARD BUS SHELTER - F-1-1a
LIGHT POST	CITY OF TORONTO STANDARD MULTI-PUBLICATION STRUCTURE - F-1-4b	MULTIUSE TRAIL	RAISED PLANTER	APPROXIMATE AREA OF EXCAVATION	EXISTING BUILDING FOOTPRINT AND ADDRESS NUMBER
LIGHT POST COMBINED WITH HYDRO	CITY OF TORONTO STANDARD MESSAGE CENTRE - F-1-7a	OUTLINE OF STATION BUILDINGS - INDICATED IN METROLINX REFERENCE CONCEPT DESIGN	SPECIES COMPLIANT WITH HYDRO HEIGHT RESTRICTIONS	DRIVEWAY	GREEN MEDIAN
CITY OF TORONTO STANDARD BENCH - F-1-3a			EXISTING TREE PRIVATE PROPERTY	BUS STOP	GREY MEDIAN

